

FURUTECH

PURE TRANSMISSION



NCF POWER VAULT-E

Premium Furutech Power Distributor

LUXURIOUSLY ENGINEERED POWER DISTRIBUTOR INCORPORATING NCF
-----Nano Crystal² Formula-----



Introducing the NCF Power Vault-E: Elevate Your Audio Experience with Unparalleled Luxury

Discover the epitome of power distribution units with our NCF Power Vault-E, meticulously designed to redefine your audio experience. Crafted with precision and sophistication, this unit seamlessly blends luxury and cutting-edge technology for audiophiles who demand the best.

Fortress-Inspired Build for Unparalleled Protection

Immerse yourself in a world of pristine sound with a chassis crafted with the solidity and precision akin to a fortress. The special-grade aluminum alloy is CNC-machined to perfection, providing an impenetrable shield against EMI and RFI. Your audio components are safeguarded within a meticulously crafted compartment, housing independently wired sockets using premium shielded α (Alpha)-OCC conductor wire high-purity conductors.



The NCF Power Vault-E is engineered with a core principle in mind: a power distribution unit should not only distribute power but also effectively tackle high-frequency noise. Your audio experience is fundamentally shaped by the quality of incoming electricity, and disturbances like storms traveling through the AC line and its ground can severely impact your system's performance. Particularly in finely tuned audio setups, nuances in recordings can be magnified, revealing any issues within the power chain, especially noise interference from the AC mains.

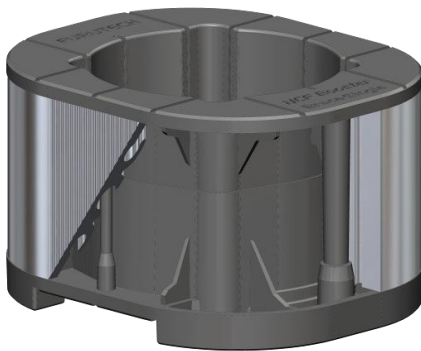
High-frequency and electromagnetic noise, emitted throughout a system like an antenna effect, pose significant challenges in removal. While many power distribution products attempt to mitigate this noise with basic electrical circuits, the NCF Power Vault-E takes a different approach. By employing specialized materials, advanced isolation techniques, and innovative grounding methods, it introduces an "induction and absorption" method specifically tailored to eliminate this unwanted noise. With the NCF Power Vault-E, immerse yourself in the delicacy, refinement, and nuance of every performance. Unleash micro- and macro-dynamics that will captivate and leave you breathlessly engaged. Elevate your audio and visual experience with Furutech's game-changing technology.

Incorporating Advanced Materials and Technologies Ensures Stable Quiet Power for your Entire System

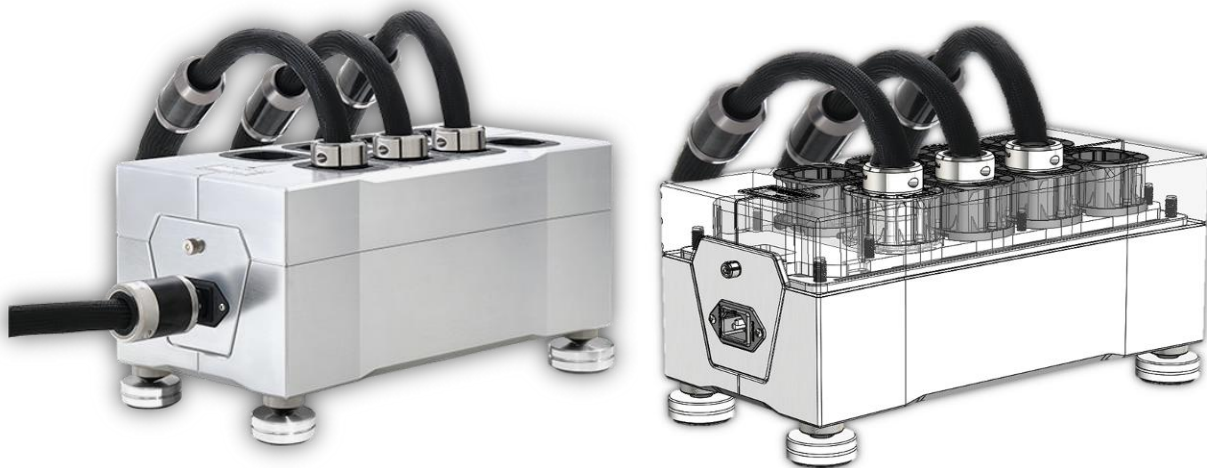
NCF (Nano Crystal² Formula):

NCF is a special crystalline material that has two 'active' properties. First, it generates negative ions that eliminate static. Second, it converts thermal energy into far infrared. Furutech combines this remarkable material with nano-sized ceramic particles and carbon powder for their additional 'piezoelectric effect' damping properties. The resulting Nano Crystal² Formula is the ultimate electrical and mechanical damping material. Created by Furutech, it is found exclusively in Furutech products.

NCF Booster Brace-Single - Power Connector Damping Support:



Elevating Audio Performance through Multi-Material Hybrid Structure
Crafted with precision, the NCF Booster-Brace-Single boasts a multi-material hybrid structure designed to effectively absorb vibrations from connectors and cables. At its core is the specially formulated material known as 'NCF,' engineered to combat static build-up while providing robust damping effects. This unique composition not only suppresses noise but also enhances the electrostatic effect, resulting in heightened silence and clarity in sound reproduction. This innovative design dramatically enhances their performance, delivering a noticeable improvement in audio quality.



Furutech's Revolutionary Two-Stage Alpha Process:

Furutech pioneers' innovation with a cutting-edge two-stage process designed to enhance audio system performance. In the first stage, metal components undergo deep cryogenic freezing, reducing internal stress and improving structural stability, thus enhancing conductivity and signal transfer.

The second stage involves Furutech's patented Ring Demagnetization treatment, eliminating magnetization effects for immediate improvements in conductivity. Every metallic component undergoes this treatment, ensuring stress-free, stable, and highly conductive materials.

The result? A meticulously engineered synergy of the 2-Step Alpha Cryogenic and Demagnetizing Process, delivering optimized AC power transfer and heightened power, dynamics, and resolution. Experience cleaner backgrounds, expansive soundstage, vivid tonal colors, and deeper frequency range extension.

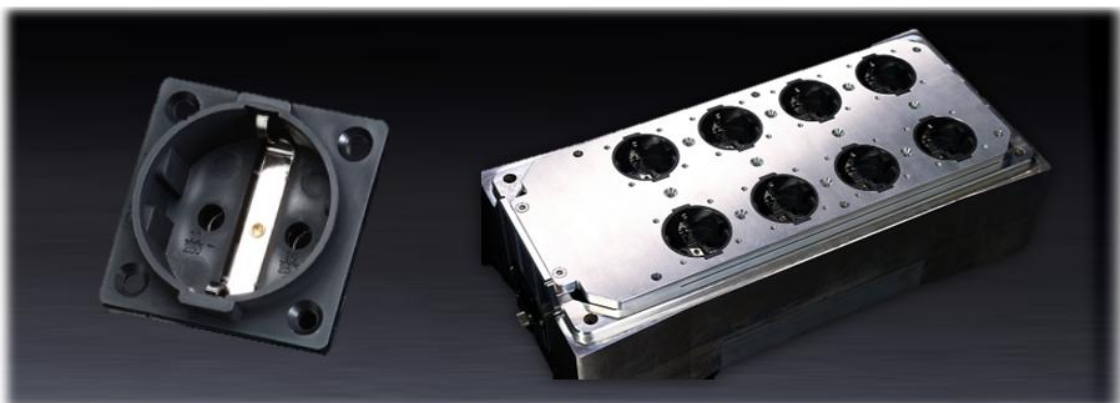
CNC machined Premium-grade Aluminum Chassis:

Precision-milled from special-grade thick aluminum blocks, each compartment houses eight independently wired receptacles, ensuring optimal performance. Finished with a stunning hairline anodized treatment, these compartments exude both engineering beauty and functionality.



FI-E30 NCF - High End Performance NCF Schuko Socket:

Furutech Hyper Quality High Performance α (Alpha) Pure Copper nonmagnetic rhodium-plated schuko sockets are wired to a high-performance rhodium-plated pure copper IEC inlet for stable, long lasting, optimized power transfer.



α (Alpha)-12: 12AWG(3.37sq.mm)

The NCF Power Vault-E utilizes α (Alpha) OCC single crystal oxygen-free copper as the conductor in our cables. This conductor consists of 7 strands, each containing 19 meticulously arranged 0.18mm OCC copper wires. The result exceptionally low impedance and outstanding conductivity, ensuring pristine signal transmission. To further elevate performance, we fill the cable with special audio grade UL-CL3 PVC. This material not only possesses superior electrical properties but also minimizes capacitive reactance, preserving the integrity of your audio signals. Additionally, its shock-absorbing damping effect enhances overall sound quality, delivering an immersive listening experience that captivates the senses."



Formula GC-303

GC-303 is a special material Furutech bonds to the interior bottom-plate of the chassis that absorbs EMI (Electromagnetic Interference) generated by the internal fittings of the unit. The unit uses no filtering besides Formula GC-303 so AC resistance is kept to a minimum, allowing a more resolving, powerful, dynamic, and colorful performance from your components.

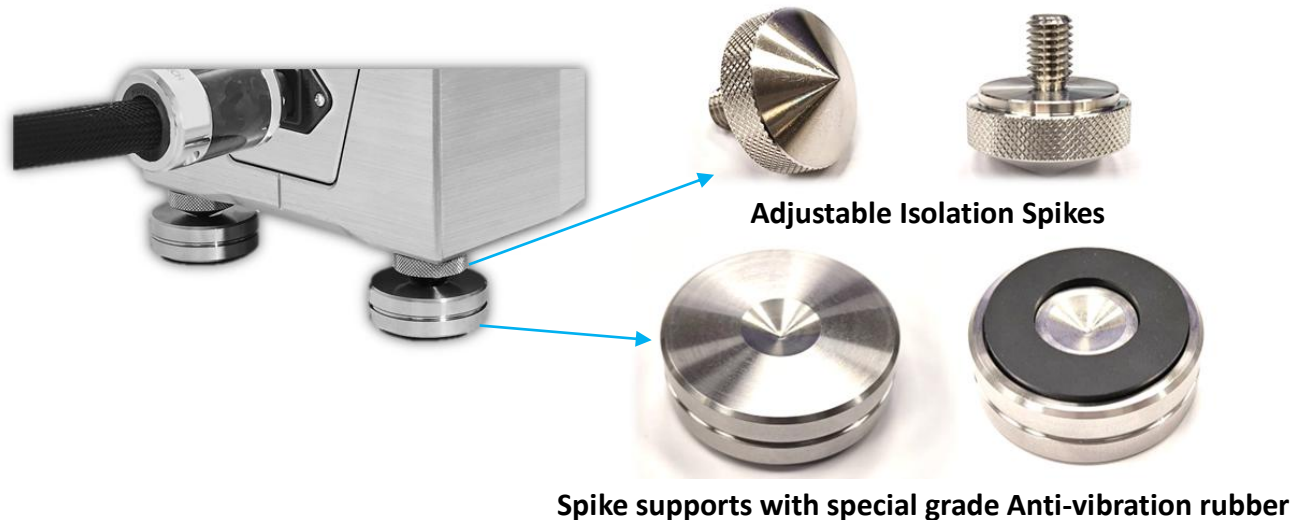
FI-09 NCF- Top-end NCF Performance IEC Inlet



α (Alpha) Pure-Copper Rhodium-plated Conductor plus Nanocrystal formula NCF special crystal powder (Power) material elevates Furutech's concept of pure transmission signal ("Furutech" Pure transmission signal) to a whole new level.

Nonmagnetic Stainless-steel Anti-Vibration Isolation Spikes

Featuring four finely crafted adjustable Nonmagnetic Stainless-steel Isolation Spikes, the NCF Power Vault-E is designed for stability. Its special double hardness anti-vibration rubber ensures secure positioning of your system's power cords, minimizing lateral displacement and vibration. This setup effectively reduces internal reflections, enhancing sound clarity and openness



Adjustable Isolation Spikes:

The Nonmagnetic Stainless-steel Spikes with a knurling design, offer effortless adjustment for optimal system support.

Spike Supports with special grade Anti-vibration rubber:

Double-sided Spike Supports feature a nonmagnetic stainless-steel paired with specialized double hardness anti-vibration rubber, ideal for various soft and hard flooring surfaces, ensuring optimal sound performance. Their unique design allows for versatile usage, catering to individual preferences.

Specifications

The NCF Power Vault-E: Pure Transmission Technology in its Purest Form

- ♦ Chassis: CNC machined special-grade aluminum alloy with hairline anodized surface
- ♦ AC Input/Output: 10A IEC input/ 8 KEMA-KEUR Rated Schuko Socket
- ♦ Materials Processing: Metal parts treated with α (Alpha) Cryogenic and Demagnetizing Process
- ♦ Ground/Earth connection: Chassis Grounding Post
- ♦ IEC Inlet: FI-09 NCF (R) – α (Alpha) pure copper conductor rhodium-plated
- ♦ Receptacles: 8 High End Performance FI-E30 NCF (R) Schuko sockets

- ♦ NCF Booster Brace-Single: 8 Power Connector Damping Support
- ♦ Internal wiring: Alpha-12 - Stranded α (Alpha)-OCC conductor wire treated with Furutech's α (Alpha) Cryogenic and Demagnetizing Process / UL compliant insulation: Special grade Flexible UL-CL3 PVC
- ♦ Rated: 10A 250V A.C. 2500AV
- ♦ Size: 350mm W x 169mm H x 140.5mm D approx. (Without Isolation Spike and Spike Supports)
- ♦ Weight: 11.3kgs approx.

Product name	Product Introduction	Jan Code
NCF Power Vault -E	Top-of-the-Line Power Distributor	XXXXXXXXXXXXXX

*All metal parts are treated with ***FURUTECH** α (Alpha) Process (Super Cryogenic & Demagnetize Treatment.)*

www.furutech.com service@furutech.com

FURUTECH CO., LTD.

 **NCF**[®] is a registered trademark of Furutech Co., Ltd. Japan